

Kansas Fishing Atlas

2024 Public Fishing Access

Includes
Walk-in Fishing Access (WIFA)

Get our mobile app
GoOutdoorsKS



WIFA Area Rules

Walk-in Fishing Access (WIFA), formerly F.I.S.H., sites are leased from private landowners and are typically open to public fishing from March 1 – Oct. 31, though some properties are open year-round. The WIFA program provides anglers increased opportunities to enjoy fishing on the state's streams and small impoundments, all that is required is a state fishing license. Funding for the program is provided through fishing license revenues and Sport Fish Restoration Funds. Please observe all rules and regulations, and remember that common sense and ethical behavior will influence the future of the program.

The following guidelines help maintain a good relationship between landowners and anglers:

1. Look for the WIFA signs (pictured below) before entering the property. Sites may have been withdrawn from the program. If you do not see signs, do not enter.
2. Obey lease boundaries. Stay within 50 feet of the stream or impoundment shoreline. If the WIFA property is a stream, fish only on the side of the stream that is posted as an access site. Do not walk or fish on adjacent property.
3. Respect the rights of landowners, as well as others using the area. Treat the land as if it were your own.
4. Take all trash with you when you leave. If someone before you has irresponsibly left trash, please take a moment and pick it up, too.
5. Do not open gates or enter properties with vehicles unless authorized. Park along the road or in designated parking areas. Leave field-access, drives, and rural roads open so that landowners moving large implements may pass.

6. Avoid stretching fences when crossing them, and use fence stiles where available.

7. Do not attempt to contact cooperating landowners to ask about fishing other portions of their land.

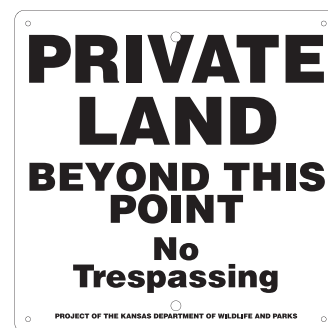
Regulations governing WIFA area use:

- Impounded WIFA waters have a **creel limit of two channel catfish, a creel limit of two largemouth bass, and an 18-inch minimum length limit on largemouth bass**. Otherwise, all Kansas fishing regulations and statewide creel limits apply. It's especially important for anglers using the sites to respect and follow the rules that apply on WIFA properties. You do not need to contact the landowner for permission on WIFA waters.

- Seining is prohibited on all WIFA waters, and trotlines and setlines are prohibited on impoundments under 1,201 acres in size (KAR 115-8-6); No swimming (KAR 115-8-8); Camping by posted notice only (KAR 115-8-9); No pets, except on a leash (KAR 115-8-10); No horseback riding (KAR 115-8-11); No stocking or release of wildlife, including the dumping of live bait (KAR 115-8-12); Vehicles shall be operated only as authorized (KAR 115-8-13); No fireworks (KAR 115-8-14); No unauthorized fires (115-8-15); No target practice (KAR 115-8-1); No littering (KAR 115-8-18); No cereal malt beverages or alcoholic liquor (KAR 115-8-19); Destructive acts such as digging or destroying signs or vegetation is prohibited (KAR 115-8-20).

- All Kansas boating laws are in effect on WIFA waters.

Due to unforeseen conditions and/or renovations, some properties may be dry, lower than normal or flooded. Water quality and vegetation may vary among properties.



Look for these signs before accessing a WIFA area.

Fishing Reports and Newsletters

Fishing Reports

Fishing reports are available on ksoutdoors.com and provide information regarding seasonal fishing trends on your favorite lakes and reservoirs. On ksoutdoors.com, anglers can also access Google Earth files showing the locations of fish attractors.

View at:
ksoutdoors.com/Fishing/Fishing-Reports



Photo: Kayla Bouchard

Fishing Forecast

The *2024 Kansas Fishing Forecast* highlights Kansas' top fishing spots. Download an electronic copy from ksoutdoors.com, or grab a printed copy from most license vendors. Anglers can also view the forecast in the 2024 Spring issue of *Kansas Wildlife & Parks Magazine*, which can be purchased by calling (620) 672-0756.

Download at:
ksoutdoors.com/Fishing/Fishing-Forecast

This forecast is produced from data collected by fisheries management biologists during their annual lake monitoring activities (which include netting and electrofishing). Not every impoundment is sampled each year. Impoundments with low densities of certain species may not be listed.

The data is separated into three impoundment categories - reservoirs (those larger than 1,200 acres), lakes (waters from 10 to 1,200 acres), and ponds (waters smaller than 10 acres) - because sampling on small water bodies may not be comparable with that on larger waters.

The data is separated into three impoundment categories - reservoirs (those larger than 1,200 acres), lakes (waters from 10 to 1,200 acres), and ponds (waters smaller than 10 acres) - because sampling on small water bodies may not be comparable with that on larger waters.

Tables have been created for popular species and include a Density Rating, Preferred Rating, Lunker Rating (based on a 3-year sampling average), Biggest Fish and, Biologist's Rating.

The Density Rating is the number of fish that were high-quality size or larger sampled per unit of sampling effort. The number, listed in parentheses at the top of the Density Rating column, is the length of fish considered acceptable to most anglers and is different for each species. The higher the Density Rating, the more high-quality sized or larger fish per surface acre in the impoundment. Theoretically, an impoundment with a Density Rating of 30 has twice as many high-quality sized fish per acre as an impoundment with a Density Rating of 15.

The Preferred Rating identifies how many above-average-sized fish a water contains. For example, an impoundment may have a good density of crappie, but few fish over 10 inches. The Preferred Rating tells you which lake to go to for a chance to catch bigger fish.

The Lunker Rating is similar to the Density Rating, but it tells you the relative density of lunker-sized fish in an impoundment. A lunker is a certain length of fish considered a trophy by most anglers. It also differs with each species and is listed in parentheses at the top of the Lunker Rating column. For example, most anglers consider a channel catfish larger than 28 inches a lunker. Many impoundments may have a Lunker Rating of 0, but this does not mean there are no big fish in that impoundment. It just means that no lunker fish were caught during sampling, and they may be less abundant than in impoundments with positive Lunker Ratings.

You can use the Density Rating and Lunker Rating together. If you want numbers, go with the highest Density Rating. If you want only big fish, go with the Lunker Rating. An impoundment with a respectable rating in all three categories will provide the best overall fishing opportunities.

The Biggest Fish (lbs.) column lists the weight of the largest fish caught during sampling period.

The Biologist's Rating (BR) adds a human touch to the forecast and allows each biologist to consider environmental conditions that may have affected the sampling. They also consider previous years' data. A rating of P (poor), F (fair), G (good), or E (excellent) will be in the last column. Sometimes the Density Rating may not agree with the Biologist's Rating. This will happen occasionally and means the Density Rating may not accurately reflect the biologist's opinion of the fishery.

This brochure is designed to help improve your fishing success. Your ability to catch fish depends on many factors such as water temperature, water clarity, weather, angling skills, fishing pressure, and density of fish in the lake (i.e. number of fish/acre). You may not have much control over many of these factors, but you can use these tables to select a high-density population of your favorite species.

Be sure to keep a copy of the current Kansas Fishing Regulations Summary in your tackle box. The summary includes laws and regulations, information about aquatic nuisance species precautions and distribution, the length and creel limits for reservoirs, state fishing lakes and community lakes. The summary also has an application for Master Angler Awards, as well as a list of state records.

KANSAS Fishing Forecast 2024

Purchase your fishing license with the **GoOutdoorsKS** mobile app available in the Google Play and the Apple store.

Kansas Department of Wildlife and Parks

Visit ksoutdoors.com for a complete list of all sampling results.



FREE FISHING DAYS
June 1-2, 2024

Become a Certified Angler Instructor



If you have a passion for the outdoors and enjoy sharing your knowledge with others, this program is for you. The Angler Education Program is designed to recruit individuals who have a passion for fishing and want to share it with others. The Kansas Department of Wildlife and Parks (KDWP) has partnered with Fishing's Future, a not-for-profit group with a mission to reconnect kids with nature, strengthen family bonds, and instill a responsibility for stewardship of our natural resources.

Similar to KDWP's Hunter Education Program, Angler Education will certify volunteer instructors to teach everything from class design and working with children, to environmental stewardship, knot tying, fish identification, and casting.

Certified instructors may work alone or with other instructors to teach general fishing information, specific fishing techniques, or just take families fishing.

Visit fishingsfuture.org for details.



Reservoirs, State Fishing Lakes & Other Waters

REGION 1 (WEST)

Barber SFL (55 F10), 77 acres, Upper End Periodically Dry
Cedar Bluff Reservoir (28 B11), 6,869 acres, **AIS Alert**
Clark SFL (52 D11), 300 acres
Concannon SFL (39 C3), 50 acres
Ford SFL (40 G9), 45 acres
Glen Elder Reservoir (6 J12), 12,586 acres, **AIS Alert**
Goodman SFL (28 H10), 40 acres, Periodically Dry
Hodgeman SFL & WA (40 C10), 87 acres, Periodically Dry
Jewell SFL (7 G1), 57 acres
Kanopolis Reservoir (31 D3), 3,550 acres, **AIS Alert**
Keith Sebelius (Norton) Reservoir (4 E9), 2,300 acres
Kiowa SFL (41 J3; 53 A3), 21 acres
Kirwin Reservoir (5 H4), 5,000 acres
Logan SFL (14 I9), 60 acres, Periodically Dry
Lovewell Reservoir (7 D2), 2,986 acres
Meade SFL (51 H4), 80 acres
Ottawa SFL (20 F7), 138 acres,
Pratt - Centennial Pond / Kid's Fishing Pond (42 J9), 4 acres
Rooks SFL (17 B3), 67 acres, Periodically Dry
Saline SFL (19 J6), 38 acres, Periodically Dry
Sandsage Bison Reserve Pond (38 E12), 5 acres, Periodically Dry
Scott SFL (26 C12), 115 acres
Sheridan SFL (15 B6), 67 acres
St. Francis Sand Pits, 5 acres
Webster Reservoir (17 B1), 3,780 acres
Wilson Reservoir (18 I10), 9,040 acres, **AIS Alert**

REGION 2 (NORTHEAST)

Atchison SFL (11 G5), 66 acres
Brown SFL (11 D3), 62 acres
Browning Oxbow (12 D8), 100 acres, **AIS Alert**
Clinton Reservoir (23 I4), 7,000 acres, **AIS Alert**
Clinton State Park - Lake Henry & Picnic Pnds (23 H4), 3.5 acres
Douglas SFL (23 J6), 180 acres
Fort Leavenworth - Merritt Lake (24 B8), 5 acres
Fort Leavenworth - Smith Lake (24 B8), 5 acres
Geary SFL (21 I2), 97 acres **AIS Alert**
Hillsdale Reservoir (36 B8), 4,580 acres, **AIS Alert**
Jeffery EC Lakes (22 C9), 125/450 acres, **AIS Alert**, Limited Access
John Redmond Reservoir (34 J12), 9,400 acres, **AIS Alert**
La Cygne Reservoir (36 G11), 2,600 acres
Leavenworth SFL (23 E6), 160 acres
Lyon SFL (34 E10), 135 acres, **AIS Alert**
Marais des Cygnes Wildlife Area (36 I10), 1,967 acres
Melvern Reservoir (34 F12; 35 E1), 7,000 acres, **AIS Alert**
Melvern River Pond (35 E1), 90 acres, **AIS Alert**
Miami SFL (36 F10), 101 acres
Middle Creek SFL (36 E11), 280 acres
Milford Reservoir (21 E1), 16,020 acres, **AIS Alert**
Milford Hatchery Supply Pond (21 G1), 100 acres
Milford State Park Pond (21 F1), 2 acres

Nebo SFL (11 J1), 38 acres
Nemaha SFL (10 E9), 18 acres
Osage SFL (35 A1), 140 acres **AIS Alert**
Perry Reservoir (23 E3), 11,600 acres, **AIS Alert**
Pomona Reservoir (35 C2), 4,000 acres, **AIS Alert**
Pottawatomie SFL #1 (9 J6), 24 acres
Pottawatomie SFL #2 (21 D5), 75 acres
Shawnee SFL (22 D12), 135 acres
Tuttle Creek Reservoir (21 C4), 15,800 acres **AIS Alert**
Washington SFL (8 C11), 65 acres

REGION 3 (SOUTHEAST)

Big Hill Reservoir (59 E4), 1,240 acres
Big Hill WA North Lake (59 E4), 14 acres
Big Hill WA South Lake (59 E4), 5 acres
Black Kettle SFL (32 J8), 8 acres
Bourbon SFL (48 F7), 103 acres
Butler SFL (57 A4), 124 acres
Chase SFL (33 H4), 109 acres, **AIS Alert**
Cheney Reservoir (43 H5), 9,550 acres, **AIS Alert**
Council Grove Reservoir (33 C5), 3,280 acres, **AIS Alert**
Cowley SFL (57 I3), 84 acres
Crawford SFL (48 I10), 150 acres
El Dorado Reservoir (45 F3), 8,000 acres, **AIS Alert**
Elk City Reservoir (59 F1), 4,450 acres
Fall River Reservoir (46 I10), 2,500 acres
Kingman SFL (43 J1), 144 acres
Marion Reservoir (32 H12), 6,160 acres, **AIS Alert**
McPherson SFL (32 F8), 46 acres, **AIS Alert**
Mined Land Wildlife Area (60 E9), 1,500 acres, Multiple Locations
Montgomery SFL (59 G1), 105 acres
Neosho SFL (59 C6), 92 acres
Neosho Wildlife Area (60 A7), 800 acres
Riverton - Empire Lake (60 H11), 800 acres
Toronto Reservoir (46 G11), 2,800 acres
Wilson SFL (47 H1), 110 acres
Woodson SFL (46 G12), 180 acres

Aquatic Invasive Species (AIS) ALERTS: Aquatic invasive species (AIS) pose a threat to native aquatic wildlife and plants. AIS species include the zebra mussel, New Zealand mud snail, rusty crayfish, silver carp, bighead carp, black carp, white perch, purple loosestrife, saltcedar, fertile grass carp, and Eurasian watermilfoil. The areas listed above may have a red "AIS Alert" if AIS have been found there. Please consult a current Kansas Fishing Regulations Summary for more information about AIS and how to prevent their spread.

COMMUNITY FISHERIES ASSISTANCE PROGRAM

The Kansas Department of Wildlife and Parks (KDWP) has continued the Community Fisheries Assistance Program (CFAP) for 2024. CFAP leases the fishing rights of approximately 13,000 acres of community lakes statewide.

Community cooperators will not charge anglers additional fees to fish from the shore or from a boat, even if permits have been required in the past. State fishing license requirements still apply, and activities other than fishing at these lakes may require additional permits. KDWP hopes removing cost barriers will allow more anglers to enjoy these fishing opportunities more often. When you see the CFAP logo at your local community lake, take a friend, head on in, and wet your lines!



Family Friendly Facility (FFF): While all Community Fisheries Assistance Program (CFAP) lakes are great places to go fishing, some offer extra amenities to support family fishing trips. At these locations, no alcohol is allowed, there are flush toilets, security patrols are conducted regularly, security lighting is in place, and there are easily accessible fishing spots. Any CFAP lake that provides these amenities is termed a "Family Friendly Facility" (FFF) and is indicated as such in the list of CFAP lakes.

NO ADDITIONAL FISHING FEES are charged at the following community lakes:

REGION 1 (WEST)

Agra City Lake (5 E5), 7 acres, **FFF**
Atwood Lake (2 E11), 31 acres
Belleville - Rocky Pond (8 D7), 27 acres, **FFF**, Periodically Dry
Beymer Sand Pits (38 E9), 18 acres
Cimarron Grasslands Fishing Pits (49 H3), 15 acres
Colby - Villa High Lake (14 B11), 2 acres
Coldwater City Lake (53 F2), 250 acres
Dodge City - Lake Charles (40 H8), 1 acre
Dodge City - Mariah Hills Pond (40 H8), 2 acres
Dodge City - High School Demon Lake (40 H8), 1.5 acres
Ellis City Lake (17 I1), 30 acres, **FFF**
Finney Co. - Wildwood Park (38 E12) 2 ponds, 10 acres each
Graham Co. - Antelope Lake (16 B8), 80 acres
Graham Co. - Trexler Lake (16 A10), 43 acres
Great Bend - Stone Park Lake (30 I8), 50 acres
Great Bend - Vets Park Lake (30 H8), 13 acres, **FFF**
Hays - Vineyard Park Pond (17 J3), 0.5 acres
Heston Interstate Park Pond (44 B9)
Horse Thief Reservoir (40 C8), 450 acres
Inman - County Park Pond (31 J5), 1 acre
Jetmore City Lake (40 C9), 106 acres, Periodically Dry
Jewell - Emerson Lake (7 G1), 10 acres
La Crosse - Warren Stone Lake (29 E3), 30 acres, Periodically Dry
Larned City Pond (41 A5), 2 acres
Lenora City Lake (59 C1), 38 acres, Periodically Dry
Liberal - Arkalon Recreation Area (51 H1), 5 acres
Lincoln Co. - McReynolds Park (19 H2), River Access
Logan City Lake (4 H12), 25 acres
Moundridge Park Pond (44 A8), 2 acres
Plainville Township Lake (17 D3), 144 acres
Pratt County Lake (42 J9), 51 acres
Salina - Indian Rock Pond (32 A7), 2 acres, Periodically Dry
Salina - Lakewood Lake (20 J7), 6 acres, **FFF**
Sherman - Smoky Gardens (13 D4), 11 acres, Periodically Dry
St. Francis - Keller Lake (1 E3), 3 acres
Syracuse - Sam's Pond (37 D3), 50 acres
Ulysses City Lake (50, A8)

REGION 2 (NORTHEAST)

Alma City Lake (22 H8), 80 acres
Atchison City Lake 23 - Warnock Lake (11 I5), 39 acres, **FFF**
Atchison City Lakes 1-4, 6-9, 24 (11 H5), 51 acres
Atchison Co. Lake (11 G2), 60 acres
Baldwin - Spring Creek Lake (35 A6), 7 acres
Blue Mound City Lake (48 A7), 19 acres
Bonner Springs - North Park Lake (24 F8; B1 G4), 3 acres
Carbondale - East Lake (23 J1), 265 acres
Centralia City Lake (10 F8), 400 acres
Coffey Co. Lake (35 J1), 5,090 acres, **AIS Alert**
Douglas Co. - Lone Star Lake (23 J3), 195 acres
Doniphan County - Troy 4-H Lake (11 E6), 5 acres
Edgerton - Bridgewater Lake (36 A7), 2.5 acres
Edgerton City Lake (36 A7), 5.2 acres
Emporia - Jones Park Ponds (34 G8), 3 acres
Emporia - Peter Pan Park Ponds (34 G8), 3 acres
Fort Riley Ponds (21 G2)
Gardner City Lake (24 I8; B3 I3), 100 acres, **AIS Alert**
Garnett - Cedar Valley Res. (35 I4), 350 acres
Garnett - Crystal Lake (35 I5), 25 acres, **FFF**
Garnett City Lake North (35 H5), 55 acres, **FFF**
Gridley City Lake (46 B12), 33 acres
Herington - Fr. Padilla Pond (33 C1), 2 acres
Herington City Lake - New (33 C1), 555 acres
Herington City Lake - Old (33 C1), 367 acres
Hiawatha City Lake (11 D2), 7 acres
Holton - Elkhorn Lake (10 J12), 4 acres
Holton - Prairie Lake (11 J1), 78 acres, **FFF**
Horton - Little Lake (11 G2), 10 acres
Horton - Mission Lake (11 F2), 125 acres
Jackson Co. Banner Creek Reservoir (10 J12), 535 acres, **FFF**
Jackson Heights High School Pond (10 I12), 1 acre
Junction City - Bluffs (21 H2), 5 acres
Junction City - Homer's Pond (21 H2), 5 acres
Junction City Wetland Park and Riverwalk Ponds (21 H2), 9 acres
Lansing City Lake (24 C8), 2 acres
Lansing City Lake #2 - Bernard Park Pond (24 C8), 2 acres

Aquatic Invasive Species (AIS) ALERTS: Aquatic invasive species (AIS) pose a threat to native aquatic wildlife and plants. AIS species include the zebra mussel, New Zealand mud snail, rusty crayfish, silver carp, bighead carp, black carp, white perch, purple loosestrife, saltcedar, fertile grass carp, and Eurasian watermilfoil. The areas listed above may have a red "AIS Alert" if AIS have been found there. Please consult a current Kansas Fishing Regulations Summary for more information about AIS and how to prevent their spread.

Lawrence - Mary's Lake (23 H5), 6 acres, **FFF**
 Lawrence - Oregon Trail Park Pond (23 H4), 1.5 acres
 Lawrence - Pat Dawson Billings N&S Lakes (23 H4), 10 acres
 Lawrence - Sandra Shaw Pond (23 G5), 3 acres
 Leawood - Ironwoods Park Pond (24 I11; B4 H12), 1.5 acres
 Leawood - Tomahawk Parkway Lakes (24 H11; B4 E12), 5 acres
 Lebo City Lake (34 G11), 70 acres
 Lenexa - Lake Lenexa (24 G9; B3 C6), 30 acres, **FFF**
 Lenexa - Mize Blvd. Lake (24 H8; B3 D4), 5 acres
 Lenexa - Resurrection Pond (24 G10; B4 B9), 2 acres
 Lenexa - Rose's Pond (24 G10; B4 B8), 2 acres, **FFF**
 Linn Co. Critzer Res. (48 A8), 220 acres
 Linn Co. Strip Pits (48 B11), 1 acre
 Louisburg - Lewis/Young Park Lake (36 B10), 2 acres
 Louisburg City Lake (36 C11), 23 acres
 Manhattan - Jerry Dishman Lake (21 E4), 6 acres, **FFF**
 Marysville - Country Club Lake (9 D4), 10 acres
 Melvern - River Trail Area (35 E1) 0.6 miles
 Mound City Lake (48 A9), 148 acres
 Oak Lawn - Idlewild Pond (44 J10), 3 acres
 Ogden City Lake (21 F3), 24 acres
 Olathe - Blackbob Pk Pd (24 I10; B4 H8), 1 acre, **FFF**
 Olathe - Cedar Lake (24 I9; B3 I6), 56 acres
 Olathe - Frisco Lake (24 I9; B4 G7), 12 acres
 Olathe - Heatherstone Park Pond (24 H10; B4 F8), 1 acre
 Olathe - Lake Olathe (24 I9; B3 H5), 172 acres
 Olathe - Mahaffie Farmstead Pond (24 I9; B4 F7), 1 acre
 Olathe - Olathe E HS Pond (24 H10; B4 F8), 1 acre
 Olathe - Oregon Trail Pond (24 I9; B3 H5), 2 acres
 Olathe - Prairie Center Park Pond (24 I9; B3 G5), 5 acres, **FFF**
 Olathe - Prairie Center Pond (24 I8; B3 H4), 1 acre, **FFF**
 Olathe - Settler's Park Pond (24 H9; B3 E6), 1.5 acres
 Olathe - Stagecoach Park Ponds (24 I9; B4 F7), 5 acres
 Olathe - Waterworks Lakes (24 I9; B4 G7), 7 acres
 Olpe City Lake (34 J8), 90 acres
 Olpe Kids Pond (34 I8), 1 acre
 Osage City Lake (34 D12), 49 acres
 Osage Kids Fishing Pond (34 C12), 1 acre
 Osawatomie - Beaver Lake (36 D8), 3 acres
 Osawatomie City Lake (36 D8), 21 acres
 Overbrook City Lake (35 A2), 3 acres
 Overbrook Kids Pond (35 A2), 3 acres, **FFF**
 Overland Park - Amesbury Lake (24 I10; B4 G9), 3.65 acres
 Overland Park - Kingston Lake (24 I11; B4 I11), 8 acres
 Overland Park - Regency Park Lake (24 I11; B4 H11), 3 acres
 Overland Park - South Lake (24 G10; B4 B11), 5 acres, **FFF**
 Overland Park - Summercrest Lake (24 H10; B4 E11), 1.35 acres
 Overland Park - Wilderness Lake (24 I11; B4 I12), 3 acres
 Paola - Lake Miola (36 C9), 220 acres, **FFF**
 Parker City Lake (36 H8), 7 acres
 Pleasanton City Lake - East (36 J11), 127 acres
 Pleasanton City Lake - Old (36 J10), 11 acres
 Pleasanton City Lake - West (36 J10), 32 acres
 Pottawatomie Co. Cross Creek Lake (22 A9), 49 acres
 Richmond City Lake (35 G5), 21 acres
 Sabetha - Pony Creek Lake (10 B12), 171 acres
 Sabetha City Lake (10 C11), 100 acres
 Shawnee - Monticello Springs Lake (24 G9; B3 B5), 1.5 acres
 Shawnee Co. - Lake Shawnee (23 G1; A2 G8), 416 acres, **FFF, AIS Alert**
 Shawnee Co. - Shawnee Jr. (23 G1; A2 G8), 2 acres, **FFF**
 Spring Hill - Woodland Ridge (36 A9), 2.5 acres
 Spring Hill City Lake (36 A9), 38 acres
 Topeka - Auburndale Park Stream (23 F1; A1 D5), 2 acres
 Topeka - Cedar Crest Pond (22 F12; A1 D4), 3 acres
 Topeka - Central Park Lake (23 G1; A1 E6), 3 acres
 Topeka - Clarion Park Pond (22 G12; A1 G4), 4 acres
 Topeka - Freedom Valley Lake (22 G1; A2 E7), 1 acre
 Topeka - Governor's Ponds West/East (22 F12; A1 D4), 1 acre
 Topeka - Horseshoe Bend Park Pond (23 H1; A1 H6), 1 acre
 Topeka - West Lake (22 F12; A1 D4), 6 acres, **FFF**
 Wamego City Lake (22 D7), 1 acre, **FFF**
 Waterville City Lake (9 F3), 9 acres
 Wyandotte Co. - Big 11 (24 E11; B2 D11), 3 acres, See local regs
 Wyandotte Co. - Park Pond (Bonner Lake) (24 E8; B1 E4), 7 acres,
 See local regulations

REGION 3 (SOUTHEAST)

Altamont - Idle Hour Lake East & West (59 G5), 34 acres
 Andale - Renwick USD 267 Pond (44 G7)
 Andover - Lake George (44 I12), 3 acres, **FFF**
 Anthony City Lake (55 H3), 116 acres, **FFF**, Periodically Dry
 Ark City - Knebler #1 (57 I1), 16 acres
 Ark City - Knebler #2 (57 I1), 5 acres
 Ark City - Veteran's Pond (57 I1), 16 acres
 Arma City Lake (48 J11), 1 acre, **FFF**
 Bartlett City Lake (59 I6), 19 acres
 Baxter Springs - Riverside Park Pond (60 I11) 1.3 acres
 Benton - Poling Park Lake (44 G12), 2 acres
 Bone Creek Res (48 I11), 540 acres, **FFF**
 Bourbon Co. - Cedar Creek Res (48 F10), 220 acres
 Bourbon Co. - Elm Creek Lake (48 G9), 106 acres
 Buhler City Pond (43 B5), 1 acre
 Chanute - Highland Park Pond (47 I3), 1 acre, **FFF**,
 See local regulations
 Chanute City Lake (Santa Fe Lake) (47 I3), 80 acres, **FFF**
 Cherryvale - Tanko (59 E3), 11 acres
 Clearwater - Chisholm Ridge Lakes (56 B8; C3 J2)), 5 acres
 Coffeyville - LeClere Lake (59 I2), 7 acres
 Columbus - VFW Pond (60 G10), 2 acres
 Colwich City Lake (44 G8; C1 E1), 10 acres
 Council Grove City Lake (33 C5), 434 acres, **AIS Alert**
 Derby - High Park (56 A11; C4 H10), 4 acres, **FFF**
 Derby - Rainbow Valley (56 A11; C4 G10), 2 acres
 Derby - Stone Creek (56 A11; C4 F9), 2 acres
 Edna City Lake (59 I4), 11 acres
 El Dorado - East Park Pond (45 G2), 1 acre
 Emporia - Peter Pan Pond (34 G8), 3 acres
 Emporia State University - Kings Lake (34 G9), 10 acres
 Eureka City Lake (46 E7), 259 acres, **FFF**
 Fort Scott - Lake Fort Scott (48 G10), 350 acres
 Frontenac City Lake (60 B11), 5 acres
 FSCC Lakes (48 F11), 2 acres
 Ft. Scott - Gunn Park East (48 F11), 2 acres
 Ft. Scott - Gunn Park West (48 F11), 11 acres
 Ft. Scott - Rock Creek Lake (48 F10), 75 acres

Aquatic Invasive Species (AIS) ALERTS: Aquatic invasive species (AIS) pose a threat to native aquatic wildlife and plants. AIS species include the zebra mussel, New Zealand mud snail, rusty crayfish, silver carp, bighead carp, black carp, white perch, purple loosestrife, saltcedar, fertile grass carp, and Eurasian watermilfoil. The areas listed above may have a red "AIS Alert" if AIS have been found there. Please consult a current Kansas Fishing Regulations Summary for more information about AIS and how to prevent their spread.

Greenbush Community Lake (60, A8), 5 acres
 Harvey Co. - East Park Lake (44 C11), 254 acres, **FFF**
 Harvey Co. - West Park Lake (44 C7), 15 acres, **FFF**
 Harvey Co. Camp Hawk (44 D10), 2 acres, **FFF**
 Haysville - Dorner Park Lake (56 A10, C4 G7) 9 acres
 Haysville - Riggs Lake (56 A10; C3 G6), 1 acre, **FFF**
 Howard - Polk Daniels Lake (58 B8), 69 acres
 Humboldt - Franklin Street Park Pond (47 G4), 1.5 acres
 Hutchinson - Carey Park Pond (43 D4), 5 acres, **FFF, AIS Alert**
 Hutchinson - Carey Park Lagoon (43 D4), 1 acre, **FFF, AIS Alert**
 Hutchinson - Dillon Nature Center (43 C4), 3 acres, **FFF**
 Hutchinson - North Pond (43 C4), 2 acres
 Hutchinson - River Access Park (43 L3) River Access
 Hutchinson - State Fair - Lake Talbott (43 C4), 1 acre
 Iola - Cedarbrook Ponds (47 D4), 3 acres
 Kechi Lake (44 G10; C2 D9), 1 acre
 Kingman - Hoover Pond (43 J2), 1 acre, **AIS Alert**
 Madison City Lake (46 B9), 114 acres
 Marquette - Eisenhower Park Pond, (31, E5), 1 acre
 Marion - Central Park - (33, H1), 2 acres
 Marion County Lake (33 I1), 153 acres, **FFF**
 McPherson - Lakeside Park - (32, H7), 5 acres, **FFF**
 Moline New City Lake (58 C8), 185 acres
 Moline Old City Lake (South) (58 D7), 65 acres
 Mt. Hope - Woodland Park Pond (44 F7), 2 acres
 Mulberry Park Lake (48 J12), 3 acres
 Mulvane - Cedar Brook Pond (56 B11), 1 acre
 Neodesha City Pond (59 C1) 2 acres
 Newton - Sand Creek (44 C10), 20 acres
 Newton - Spring Lake Ponds (44 D10), 7 acres,
 North Newton - Sunfield Pond (44 C10), 2 acres,
 Park City - Chishom Pointe LK (44 G10; C2 D8), 3 acres, **FFF**
 Parsons - Tolen Creek Pd (59 D6), 5 acres, See local regulations
 Parsons - West Pond (59 D5), 1 acre, See local regulations
 Parsons City Lake (59 C5), 980 acres
 Pittsburg - University Lake (60 C11), 2 acres
 Pittsburg - Lakeside (60 C11), 4 acres
 Pittsburg - Lincoln Park Lake (60 B11), 1 acre
 Pittsburg - Wilderness Park Ponds (60 B11), 3 acres
 Rose Hill School Street Pond (56 A12), 9 acres
 Sedan New City Lake (South) (58 G9), 70 acres
 Sedan Old City Lake (North) (58 G9), 55 acres
 Sedgwick - North and South Ponds (44 E9), 4 acres
 Sedgwick Co. - Lake Afton (44 J7), 258 acres, **FFF, AIS Alert**
 Severy City Lake (46 J9), 10 acres
 Sterling City Lake (43 A1), 10 acres, **FFF**
 Thayer City Lake (59 B3), 30 acres
 Thayer City Lake - New (59 B3), 45 acres
 Uniontown School Pond (48 E8), 2 acres
 Valley Center - Arrowhead Park Lake (44 G9; C1 B5), 5.4 acres
 Valley Center - McLaughlin Pond (44 G9; C1 B6), 3 acres
 Wellington - Hargis Creek Lake (56 F10), 65 acres
 Wellington City Lake (56 G8), 674 acres, **FFF**
 Wichita - Blackbird & Sunflower Ponds (SP1&SP2)
 (44 H8; C1 F2), 12 acres
 Wichita - Buffalo Park Lake (44 I8; C1 J3), 12 acres, **FFF**,
 Under Renovation
 Wichita - Chisholm Island Pond (44 H11; C2 G9), 5 acres, **FFF**
 Wichita - Chisholm North Lake (44 H11; C2 G9), 23 acres,
FFF, AIS Alert
 Wichita - Cruiser Lake (44 H10; C2 G7), 35 acres, **FFF**
 Wichita - Dillon's Pond (44 I8; C1 J2), 2 acres, **FFF**
 Wichita - Emery Park Pond (44 J10; C4 D8), 7 acres, **FFF**
 Wichita - Harrison Park Pond (44 I11; C4 A10), 1 acre, **FFF**
 Wichita - KDOT East Lake (44 H10; C2 F7), 7 acres
 Wichita - KDOT West Lake (44 H10; C2 F7), 10 acres, **AIS Alert**
 Wichita - Sedgwick Co. Park Lakes (44 I9; C1 H4), 63 acres,
FFF, AIS Alert
 Wichita - South Lake (56 A10; C3 F6), 17 acres, **AIS Alert**
 Wichita - Watson Park Lake (44 J10; C4 C7), 42 acres, **FFF**
 Windom City Lake (31 H4), 1 acre
 Winfield - Island Park Lake (57 F1), 7 acres
 Yates Center - South (Owl) (47 F1), 250 acres
 Yates Center City Lake (46 F12), 200 acres

ADDITIONAL FISHING FEES ARE CHARGED at the following lakes:

REGION 2 (NORTHEAST)

Esckridge - Lake Wabunsee (22 J8), 214 acres, **AIS Alert**
 JO Co. - Antioch Ponds (24 G10; B2 I10)), 1 acre
 JO Co. - Heritage Park Lake (24 I10; B4 I8), 20 acres
 JO Co. - Kill Creek Lake & Ponds (24 H7; B3 F2), 30 acres
 JO Co. - Shawnee Mission Lake (24 G9; B4 B7), 121 acres
 JO Co. - Stoll Park Lake (24 H10; B4 E9), 2 acres
 Lebo Kids Pond (34 G12), 2 acres
 New Strawn City Lake (35 I1), 3 acres
 WY Co. - Pierson Park Lake (24 F10; B2 G9), 12 acres
 Wyandotte County Lake (24 D9; B2 B7), 407 acres, **AIS Alert**

REGION 3 (SOUTHEAST)

Winfield City Lake (57 D2), 1,200 acres, **AIS Alert**

Aquatic Invasive Species (AIS) ALERTS: Aquatic invasive species (AIS) pose a threat to native aquatic wildlife and plants. AIS species include the zebra mussel, New Zealand mud snail, rusty crayfish, silver carp, bighead carp, black carp, white perch, purple loosestrife, saltcedar, fertile grass carp, and Eurasian watermilfoil. The areas listed above may have a red "AIS Alert" if AIS have been found there. Please consult a current Kansas Fishing Regulations Summary for more information about AIS and how to prevent their spread.

Aquatic Invasive Species (AIS)



STOP AQUATIC HITCHHIKERS!



**Please Remember
CLEAN • DRAIN • DRY**

Boats and Equipment

www.ksoutdoors.com

**AIS Awareness Course
ProtectKSWaters.org**

It is illegal to transport certain species in Kansas. Protect yourself and your natural resources.

Livewells and bilges must be drained and drain plugs removed from all vessels being removed from waters of the state before transport on a public highway.

Before leaving any body of water:

CLEAN

Inspect all equipment for anything attached (plants, animals, and mud) and **remove** anything that is found.

DRAIN

Drain all water from equipment (livewell, bilge, bait buckets) before using at a different location.

DRY

Dry all equipment for a minimum of 5 days before using again. If you need to use it sooner, **wash** with hot (140°) water.

Non-native species pose a serious threat to Kansas waters. If you find one of these species, do not release it back into the water. Contact the Emporia Research Office at (620) 342-0658 or your local KDWP office.

IT IS AGAINST STATE AND FEDERAL LAW TO RELEASE ANY EXOTIC SPECIES IN KANSAS WATERS.

Zebra Mussel

- Zebra mussels are found in some Kansas lakes, impoundments and streams. An **AIS-Alert** listing throughout this publication identifies locations known to contain asian carp, white perch, and/or zebra mussels. Fish may not be transported live from these waters. A more complete listing of affected waters can be found in the current fishing regulations summary.



- They filter vast quantities of water, which alters the entire food web within a waterbody. Although this filtering action may clear up the water in some instances, the clear water will often lead to algae blooms that are harmful to people. The clear water can also allow UV rays to damage fish eggs.
- They can reach high densities, causing problems to water intakes, docks, and boat motors. Nationwide expenditures to control zebra mussels in industrial plants alone are estimated at \$310 million per year.
- They have sharp shells that can cut the unprotected skin of humans or pets. Shoes or other protective clothing are recommended when wading in zebra mussel infested water.
- All aquatic users need to do their part to prevent the spread of zebra mussels to other waters in Kansas. Follow control recommendations and tell others how to prevent the spread of zebra mussels.

White Perch



- White perch are found in some Kansas lakes, impoundments and streams. An **AIS-Alert** listing throughout this publication identifies locations known to contain asian carp, white perch, and/or zebra mussels. Fish may not be transported live from these waters. A more complete listing of affected waters can be found in the current fishing regulations summary.
- White perch have been associated with declines in both walleye and white bass populations.
- They out-compete native fishes for food and space.
- They hybridize with white bass.
- KDWP has added white perch to the prohibited species list. The possession of live white perch is prohibited. Dead white perch may still be possessed or used as bait on the waters where they were taken.
- Spiny and soft dorsal fins are connected; both fins pop-up when spiny dorsal manually erected.



Habitattitude™

PROTECT OUR ENVIRONMENT
DO NOT RELEASE FISH AND AQUATIC PLANTS

PIJAC • U.S. FISH & WILDLIFE SERVICE • NOAA'S SEA GRANT

www.Habitattitude.net

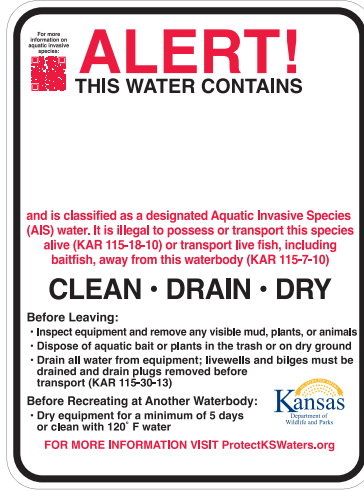
Alternatives to Release

- Contact a retailer for proper handling advice or for possible returns
- Give/trade with another aquarist, pond owner, or water gardener
- Donate to a local aquarium society, school, or aquatic business
- Seal aquatic plants in plastic bags and dispose in the trash
- Contact a veterinarian or pet retailer for humane disposal guidance
- Know your state regulations regarding these alternatives

Aquatic Invasive Species (AIS)

AIS WATERS

Waters containing bighead carp, silver carp, rusty crayfish, white perch, and/or zebra mussels are classified as AIS designated waters. Anglers fishing AIS designated waters may not leave those waters with any live fish. AIS designated waters are listed below. New waters may be included whenever bighead carp, silver carp, white perch, rusty crayfish, and/or zebra mussels are discovered. AIS designated waters will be posted with the sign illustrated to the right.



ALLEN COUNTY

Neosho R.

ATCHISON COUNTY

Brewery Cr. • Camp Cr. • Crooked Cr. • Deer Cr. • Independence Cr. • Little Stranger Cr. • Little Walnut Cr. • Missouri R. • Mooney Cr. • North Fork Stranger Cr. • Owl Cr. • Spring Cr. • Stranger Cr. • Walnut Cr. • Whiskey Cr.

BROWN COUNTY

Buttermilk Cr. • Euchre Cr. • Fox Cr. • Middle Fork Wolf R. • Mulberry Cr. • Noharts Cr. • North Fork Wolf R. • Pedee Cr. • Pony Cr. • Roys Cr. • South Fork Wolf R. • Spring Branch • Spring Cr. • Squaw Cr. • Terrapin Cr. • Walnut Cr. • Wolf R.

BUTLER COUNTY

El Dorado East Pk. Pd. • El Dorado Res. • Walnut R.

CHASE COUNTY

Chase SFL • Cottonwood R. • Panther Cr.

CHEROKEE COUNTY

Neosho R.

CLAY COUNTY

Milford Res.

CLOUD COUNTY

Solomon R.

COFFEY COUNTY

Coffey Co. Lake. • John Redmond Res. • Lebo City Lake • Neosho R. • Wolf Creek

COWLEY COUNTY

Arkansas R. • Timber Cr. • Walnut R. • Winfield CL

DICKINSON COUNTY

Kansas R. • Smoky Hill R. • Solomon R.

DONIPHAN COUNTY

Browning Oxbow • Brush Cr. • Cedar Cr. • Charlie Cr. • Cold Ryan Branch • Coon Cr. • Fox Cr. • Halling Cr. • Independence Cr. • Jordan Cr. • Kenney Cr. • Mill Cr. • Mission Cr. • Missouri R. • Mosquito Cr. • Nelson Cr. • North Branch Independence Cr. • Pennell Cr. • Peters Cr. • Rittenhouse Branch • Rock Cr. • Smith Cr. • Springs Branch • Spring Cr. • Striker Branch • Squaw Cr. • Walnut Cr. • Wolf R.

DOUGLAS COUNTY

Captain Cr. • Chicken Cr. • Clinton Res. • Coal Cr. • Kansas R. • Little Wakarusa Cr. • Mud Cr. • Spring Cr. • Wakarusa R. • Washington Cr.

ELLIS COUNTY

Smoky Hill R.

ELLSWORTH COUNTY

Kanopolis Res. • Smoky Hill R.

FRANKLIN COUNTY

Marais des Cygnes R.

GEARY COUNTY

Geary SFL • Kansas R. • Lyons Cr. • Milford Res. • Republican R. • Smoky Hill R.

JEFFERSON COUNTY

Crooked Cr. • Dawson Cr. • Delaware R. • Fall Cr. • Howard Cr. • Hulls Branch • Indian Cr. • Kansas R. • Mooney Cr. • Mud Cr. • Ninemile Cr. • Perry Res. • Plum Cr. • Prairie Cr. • Scatter Cr. • Walnut Cr.

JOHNSON COUNTY

Blue R. • Camp Branch • Captain Cr. • Clear Cr. • Camp Cr. • Cedar Cr. • Coffee Cr. • Coon Cr. • Gardner City Lake • Hillsdale Res. • Indian Cr. • Kansas R. • Kill Cr. • Little Cedar Cr. • Little Mill Cr. • Mill Cr. • Negro Cr. • Spoon Cr. • Tomahawk Cr. • Turkey Cr. • Wolf Creek

KINGMAN COUNTY

Cheney Res. • Kingman Hoover Pd. • North Fork Ninescah R. • South Fork Ninescah R.

LABETTE COUNTY

Neosho R.

LEAVENWORTH COUNTY

Branch Cr • Brush Cr. • Buckhorn Cr. • Buttermilk Cr. • Corral Cr. • Cow Cr. • Cramer Cr. • Dawson Cr. • Fall Cr. • Fivemile Cr. • Hog Cr. • Island Cr. • Jarbalo Cr. • Kansas R. • Kent Cr. • Little Kaw Cr. • Little Sandy Cr. • Little Snell Cr. • Little Stranger Cr. • Missouri R. • Mud Cr. • Murray Cr. • Ninemile Cr. • Plum Cr. • Pony Cr. • Prairie Cr. • Quarry Cr. • Salt Cr. • Sevenmile Cr. • Stranger Cr. • Threemile Cr. • Tonganoxie Cr. • Walnut Cr. • West Brush Cr. • Wolf Creek

LINCOLN COUNTY

Saline R. • Wilson Res.

LINN COUNTY

Linn Valley Lakes-Main Lake • Marais des Cygnes R.

LYON COUNTY

Cottonwood R. • John Redmond Res • Melvern Res. • Neosho R. • Lyon SFL

MARION COUNTY

Cottonwood R. • Marion Res.

MARSHALL COUNTY

Clear Cr. • Manley Cr. • Pole Cr. • Tuttle Creek Res. • Tuttle Creek Res.-River Pd.

MCPHERSON COUNTY

Emerald Lake. • Smoky Hill R. • McPherson SFL

MIAMI COUNTY

Hillsdale Res. • Bull Cr. • Marias des Cygnes R. • Dorsey Branch • Paola CL (Lake Miola) • South Wea Cr.

MITCHELL COUNTY

Glen Elder Res. • Solomon R.

MORRIS COUNTY

Canning Cr. • Council Grove CL • Council Grove Res. • Neosho R.

NEMAHA COUNTY

Burger Cr. • Clear Cr. • Deer Cr. • Fisher Cr. • Fourmile Cr. • Harris Cr. • Honey Cr. • Illinois Cr. • Manley Cr. • Negro Cr. • North Fork Wildcat Cr. • Pole Cr. • Rattlesnake Cr. • Rock Cr. • South Fork Big Nemaha R. • South Fork Wildcat Cr. • Tennessee Cr. • Turkey Cr. • Wildcat Cr. • Wolf Pen Cr.

NEOSHO COUNTY

Neosho R.

OSAGE COUNTY

Marais des Cygnes R. • Melvern Res. • Melvern River and Rearing Ponds • Pomona Res. • Osage SFL • 110-Mile Cr.

OSBORNE COUNTY

Glen Elder Res.

OTTAWA COUNTY

Saline R. • Solomon R.

POTTAWATOMIE COUNTY

Big Blue R. • Jeffery Energy Center Make-up Lake. • Jeffery Energy Center Auxiliary Lake. • Kansas R. • Tuttle Creek Res. • Tuttle Creek River Pd. • Willow Lake

RENO COUNTY

Cheney Res. • Hutchinson Carey Park Pd. • Hutchinson Carey Park Lagoon

RILEY COUNTY

Big Blue R. • Kansas R. • Tuttle Creek Res. • Tuttle Creek River Pd. • Willow Lake

RUSH COUNTY

Smoky Hill R.

RUSSELL COUNTY

Saline R. • Smoky Hill R. • Wilson Res.

SALINE COUNTY

Saline R. • Smoky Hill R. • Solomon R.

SEDGWICK COUNTY

Arkansas R. • Big Slough • Cheney Res. • Chisholm North Lake • Clearwater Cr. • Emerald Bay • Lake Afton • Ninescah R. • North Fork Ninescah R. • South Fork Ninescah R. • Sedgwick Co. Park Lakes • Spirit/Boeing Employee Assoc. Lake. • Wichita-South Lake • MS Mitch Mitchell Floodway • Wichita-West KDOT

SHAWNEE COUNTY

Deer Cr. • Kansas R. • Lake Shawnee • Shunganunga Cr.

SUMNER COUNTY

Arkansas R. • Chikaskia R. • East Prairie Cr. • Ninescah R. • Prairie Cr. • Wellington CL

TREGO COUNTY

Cedar Bluff Res. • Smoky Hill R.

WABAUNSEE COUNTY

East Branch of Mill Cr. • Kansas R. • Lake Wabaunsee • Mill Cr. • South Branch Mill Cr.

WOODSON COUNTY

Neosho R.

WYANDOTTE COUNTY

Betts Cr. • Brenner Heights Cr. • Conner Cr. • Eddy Cr. • Honey Cr. • Island Cr. • Jersey Cr. • Kansas R. • Little Turkey Cr. • Marshall Cr. • Mattoon Cr. • Mill Cr. • Missouri R. • Munice Cr. • Nearman Cr. • Piper Cr. • Turkey Cr. • West Mission Cr. • Wolf Creek • Wyandotte Co. Lake.

Fishing Resources

Go Outdoors Kansas Mobile App



GoOutdoorsKS

Now you can purchase and store your Kansas hunting and fishing licenses from any mobile device!

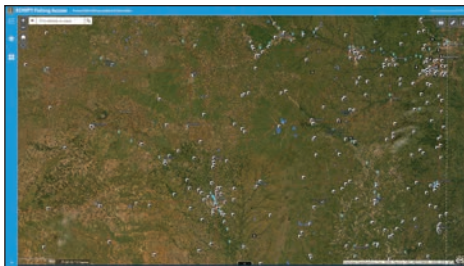
Available for Android and Apple/iOS devices. See device app store for details.

Online Atlas



Download an electronic version of the Kansas Fishing Atlas at ksoutdoors.com.

Interactive Mapping



Check out the most up-to-date version of the Fishing Atlas maps. Access searchable maps highlighting

Kansas' public fishing access locations from ksoutdoors.com. Click on individual tracts and points to display location information, zoom to areas by city or county name, and choose from various base map options.

Printed Atlas



Printed copies of the Kansas Fishing Atlas are available at most license vendors. See ksoutdoors.com to find a vendor nearest you.

Enroll Your Land



Earn extra dollars from your farm/ranch with the Walk-in Fishing Access (WIFA) program and the Walk-In Hunting Access (WIHA) program. Wildlife and Parks will be leasing ponds and river/creek access for anglers. Wildlife and Parks will also be leasing CRP, standing cover crop, milo stubble, field borders, and river/creek habitat for this coming fall hunting season and next spring's turkey hunting season.

Highlights of the program:

- KDWP pays you to allow hunting or fishing access on your land.
- KDWP will post signs to inform users of property boundaries.
- KDWP natural resource officers periodically patrol the land.
- Access by foot only. No vehicles allowed.
- State law limits normal liability.
- An atlas is printed showing all properties enrolled.

WIFA/WIHA Application

I am interested in enrolling my property in the WIFA/WIHA programs. Send me more information.

Name: _____

Address: _____

City: _____

Day Phone: _____

Evening Phone: _____

Property is located in: _____
(County)

Send to:
Attn: FISH & WILDLIFE
KDWP
512 SE 25th Ave.
Pratt, KS 67124

Game Wardens

Anyone who finds evidence of wildlife crime while afield should contact their local game warden. Details of the crime and any other information, such as license tag numbers, dates, and times, should be noted. Local game wardens can be contacted through county sheriffs' offices, by phoning the KDWP's **Operation Game Thief, 1-877-426-3843**, or by phoning one of the numbers listed below, for the county in which the crime was witnessed.

Please do not use these numbers for general information calls. General information may be obtained from ksoutdoors.com, by phoning the department's Public Affairs Section at (620) 672-5911 or by calling the local offices listed in this publication.

If you're an active outdoorsman or woman, or just concerned about conservation in your area, get to know your local game warden. They protect the resource in your area. The following list of game warden numbers and the counties for which they are responsible are provided to help concerned citizens curb wildlife crime in Kansas:

County	Officer Phone	County	Officer Phone	County	Officer Phone
Allen	(620) 212-0183	Greenwood	(620) 431-8775	Osborne	(785) 243-0553
Anderson	(785) 221-2694	Hamilton	(620) 282-7009	Ottawa	(785) 230-7148
Atchison	(785) 230-8466	Harper	(620) 770-6083	Pawnee	(620) 770-9564
Barber	(620) 770-9035	Harvey	(316) 215-2119	Phillips	(785) 342-7311
Barton	(620) 770-6083	Haskell	(620) 388-7790	Pottawatomie	(785) 256-3603
Bourbon	(620) 432-5058	Hodgeman	(620) 450-7194	Pratt	(620) 770-9035
Brown	(785) 256-1206	Jackson	(785) 256-3619	Rawlins	(785) 260-1149
Butler	(316) 215-2123	Jefferson (E ½)	(620) 450-7185	Reno	(316) 215-2124
Chase	(620) 340-5968	Jefferson (W ½)	(785) 256-3619	Republic	(620) 770-9085
Chautauqua	(620) 388-7643	Jewell	(785) 250-7028	Rice (N ½)	(785) 342-7276
Cherokee	(620) 431-8834	Johnson	(785) 250-8129	Rice (S ½)	(316) 215-2124
Cheyenne	(785) 342-7382	Kearny	(620) 282-7009	Riley	(785) 256-3614
Clark	(620) 262-7019	Kingman	(620) 770-6083	Rooks	(785) 342-7265
Clay	(785) 230-7148	Kiowa	(620) 727-4822	Rush	(620) 770-6083
Cloud	(620) 770-9085	Labette	(620) 875-2275	Russell	(620) 770-6148
Coffey	(785) 207-3151	Lane	(620) 770-6218	Saline	(785) 452-0478
Comanche	(620) 727-4822	Leavenworth	(785) 256-1204	Scott	(785) 230-5593
Cowley	(620) 229-3104	Lincoln	(785) 342-7276	Sedgwick	(316) 215-2119
Crawford (N ½)	(620) 432-5058	Linn	(785) 230-3567	Seward	(620) 262-7019
Crawford (S ½)	(620) 431-8834	Logan	(785) 230-5593	Shawnee	(785) 230-4434
Decatur	(785) 230-5960	Lyon	(620) 431-9873	Sheridan	(785) 230-5960
Dickinson	(785) 452-0478	Marion	(620) 242-4122	Sherman	(785) 342-7382
Doniphan	(785) 230-8466	Marshall	(785) 256-1207	Smith	(785) 250-7028
Douglas	(785) 230-2148	McPherson	(620) 242-4122	Stafford	(620) 770-9564
Edwards	(620) 770-9564	Meade	(620) 262-7019	Stanton	(620) 388-2951
Elk	(620) 388-7643	Miami	(913) 205-2155	Stevens	(620) 388-2951
Ellis	(620) 770-6148	Mitchell	(785) 243-0553	Sumner	(620) 326-1866
Ellsworth	(785) 342-7276	Montgomery	(620) 432-5057	Thomas	(785) 260-1149
Finney	(620) 388-7790	Morris	(620) 340-5968	Trego	(785) 483-0504
Ford	(620) 450-7194	Morton	(620) 388-2951	Wabaunsee	(785) 230-4434
Franklin	(785) 221-2694	Nemaha (N ½)	(785) 256-1206	Wallace	(785) 342-7382
Geary	(785) 338-0096	Nemaha (S ½)	(785) 256-1199	Washington	(785) 256-1207
Gove	(785) 483-0504	Neosho (N ½)	(620) 212-0183	Wichita	(785) 230-5593
Graham	(785) 342-7265	Neosho (S ½)	(620) 875-2275	Wilson	(620) 875-1976
Grant	(620) 388-2951	Ness	(620) 770-6218	Woodson	(620) 875-1976
Gray	(620) 450-7194	Norton	(785) 342-7311	Wyandotte	(785) 256-1204
Greeley	(620) 282-7009	Osage	(620) 450-7264		

Area Information Contacts

Kansas Department of Wildlife and Parks

Office of the Secretary	(785) 296-2281
Pratt Operations Office	(620) 672-5911
Region 1 Office	(785) 628-8614
Region 2 Office	(785) 273-6740
Region 3 Office	(316) 683-8069
Chanute District Office	(620) 431-0380
Dodge City District Office	(620) 227-8609
Garden City District Office	(620) 276-8886
Kansas City District Office	(913) 422-1314
Emporia Research Office	(620) 342-0658

Area & State Park Offices

Cedar Bluff	(785) 726-3212
Cheney	(316) 542-3664
Cheyenne Bottoms	(620) 793-7730
Clinton	(785) 842-8562
Council Grove	(620) 767-5900
Crawford	(620) 362-3671
Cross Timbers	(620) 637-2213
Eisenhower	(785) 528-4102
El Dorado	(316) 321-7180
Elk City	(620) 331-6295
Fall River	(620) 637-2213
Glen Elder	(785) 545-3345
Hillsdale	(913) 594-3600

Kanopolis	(785) 546-2565
Kaw River	(785) 273-6740
Lovewell	(785) 753-4971
Marais des Cygnes	(913) 352-8941
Meade	(620) 873-2572
Milford	(785) 238-3014
Mined Land	(620) 231-3173
Perry	(785) 246-3449
Pomona	(785) 828-4933
Prairie Dog/Norton	(785) 877-2953
Sandsage Wildlife Area	(620) 276-8886
Pratt Sandhills	(620) 672-5911
Scott	(620) 872-2061
Tuttle Creek	(785) 539-7941
Webster	(785) 425-6775
Wilson	(785) 658-2465

Federal Wildlife Areas

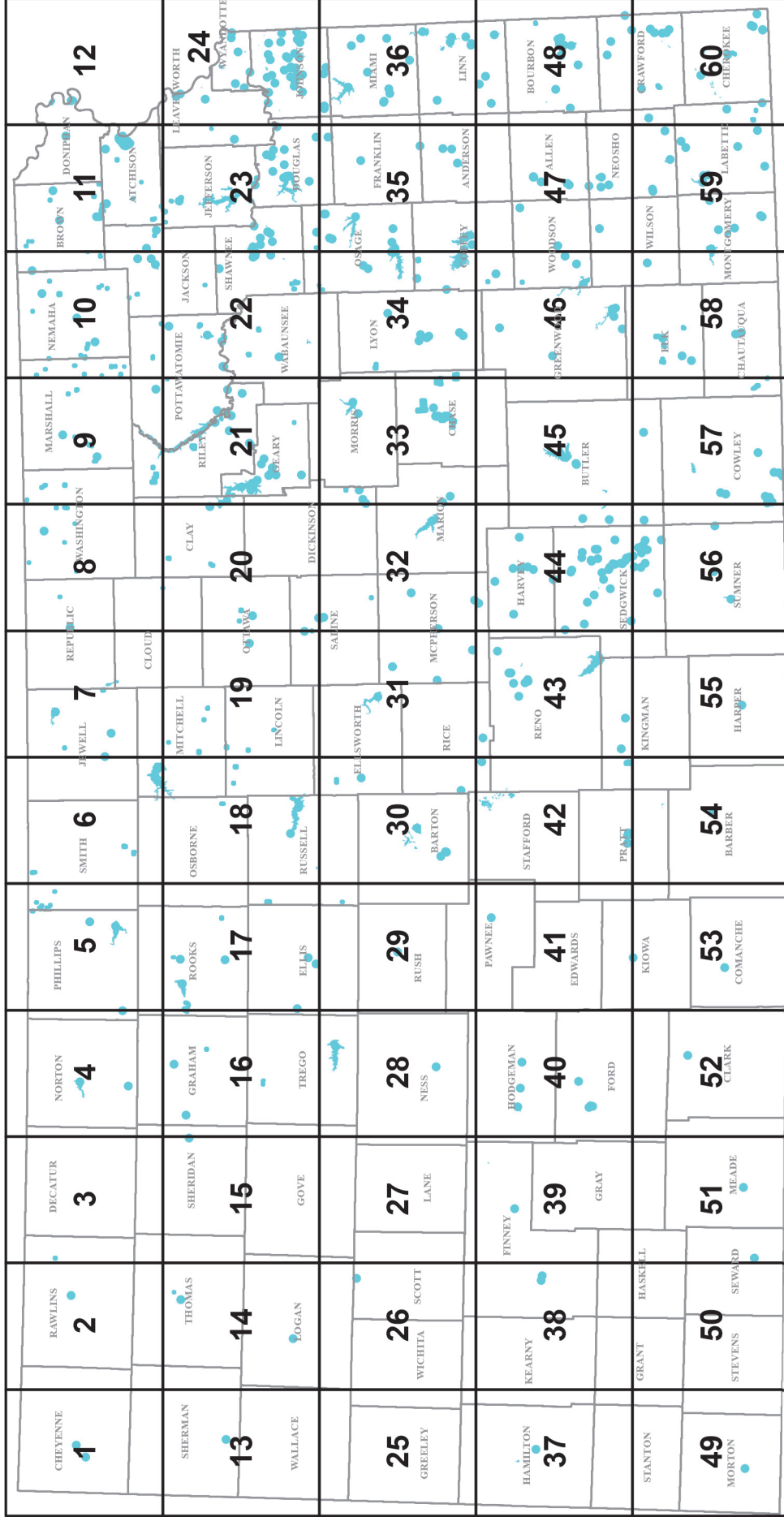
Cimarron Grasslands	(620) 697-4621
Flint Hills NWR	(620) 392-5553
Marais des Cygnes NWR	(913) 352-8956
Quivira NWR	(620) 486-2393
Kirwin NWR	(785) 543-6673
Ft Riley	(785) 239-6211

Corps of Engineers

Big Hill Reservoir	(620) 336-2741
Clinton Reservoir	(785) 843-7665
Council Grove Reservoir	(620) 767-5195
El Dorado Reservoir	(316) 321-9974
Elk City Reservoir	(620) 336-2741
Fall River Reservoir	(620) 658-4445
Hillsdale Reservoir	(913) 783-4366
John Redmond Reservoir	(620) 364-8614
Kanopolis Reservoir	(785) 546-2294
Marion Reservoir	(620) 382-2101
Melvern Reservoir	(785) 549-3318
Milford Reservoir	(785) 238-5714
Perry Reservoir	(785) 597-5144
Pomona Reservoir	(785) 453-2202
Toronto Reservoir	(620) 658-4445
Tuttle Creek Reservoir	(785) 539-8511
Wilson Reservoir	(785) 658-2551

This agency receives Federal financial assistance from the U.S. Fish and Wildlife Service. Under Title VI of the 1964 Civil Rights Act, Section 504 of the Rehabilitation Act of 1973, Title II of the Americans with Disabilities Act of 1990, the Age Discrimination Act of 1975, and Title IX of the Education Amendments of 1972. The U.S. Department of the Interior prohibits discrimination on the basis of race, color, national origin, age, sex, or disability. If you believe that you have been discriminated against in any facility, program, or activity, or if you need more information, please write to: Office of Diversity, Inclusion, and Civil Rights, U.S. Department of the Interior 1849 C Street, NW Washington, D.C. 20240 01/24

Index To Kansas Fishing Atlas Map Pages



TAKE ME FISHING™



Federal Aid Project
funded by your purchase
of fishing equipment